

DATUM

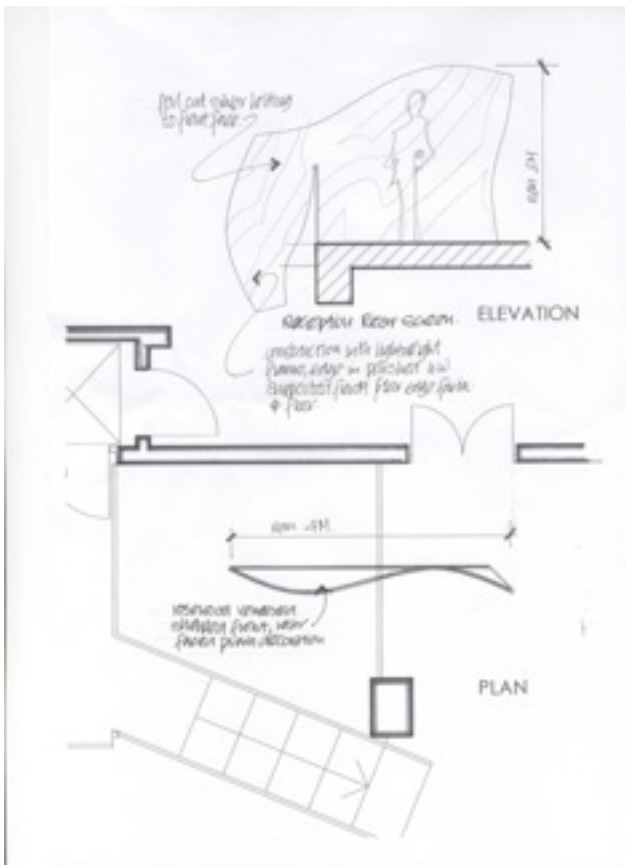
Where designs come to life

Case Studies

INTERQUEST

Forming part of the refurbishment of the reception and entrance lobby for Interquest, the designers, Allan Hefferon Design Consultants, were asked to create a conceptual feature that would be both visible from the outside and impressive to the visitor.

The entrance lobby was at ground floor level with the reception at first floor; the lobby was an open two-storey space but with little to visually connect the reception on the upper level with the entrance area.



The outcome was this impressive American walnut veneered sculpture that not only serves the reception but also spans the main balustrade over the lower floor area and facing street level.

The challenge for Datum was interpreting the visual design concept and through close collaboration with Alan Hefferon developing the initial proposal into detailed working drawings for manufacture. Another important consideration was the method of assembly and weight, in order that the large sculpture could be transported, brought into the area, be easily assembled, safely installed and structurally sound.

The illustrations and photographs highlight the conceptual and manufacturing process as well as the final installation which also features a reception desk that was veneered to compliment the main design feature.

The veneered sculpture was an extremely complex and challenging piece of bespoke joinery that was specially formed and veneered in our workshop to stunning effect, sculptured in several different directions and requiring the highest level of craft skills for which Datum are renowned.

